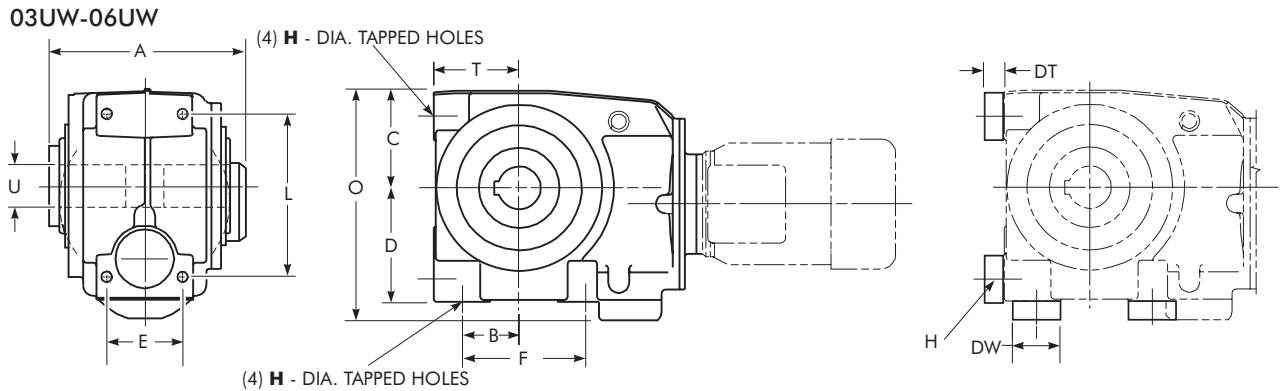


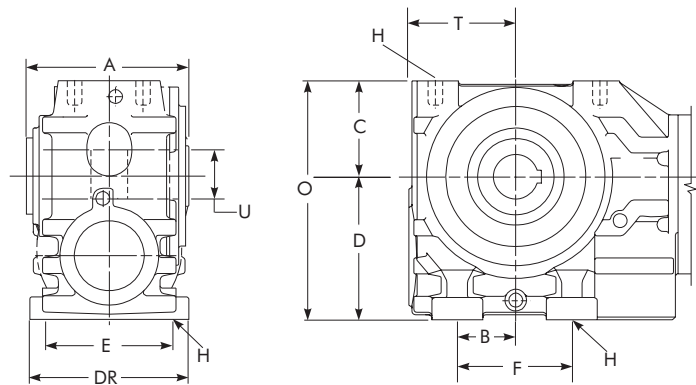
Falk UW Ultramite vs. SEW Series S



Interchange Data — Inches

SIZE	Torque ★ (lb-in.)	A	B	C	D	DT	DW	E	F	H	O	L	T	U
FALK 03UW	843	4.64		2.68	2.80	0.35	0.98				5.81		2.13	
SEW S32	565	4.72	1.38	2.48	3.15	NA	NA	3.54	2.48	0.35	5.63	3.14	2.48	0.7500
SEW S37	690	4.72		2.48	3.15	NA	NA				5.63		2.48	
FALK 04UW	1383	5.14		2.95	3.39	0.55	1.38				6.61	4.65	2.52	
SEW S42	1068	5.51	1.38	2.48	3.94	NA	NA	3.94	3.15	0.43	6.42	3.15	2.95	1.2500
SEW S47	1292	4.72		2.56	3.94	NA	NA				6.50	3.15	2.95	
FALK 05UW	3078	5.52		3.46	3.78	0.63	1.57				7.87	5.59	2.68	
SEW S52	1480	5.71	1.77	3.07	4.41	NA	NA	4.34	3.94	0.43	7.48	3.94	3.15	1.3750
SEW S57	2320	5.91		3.03	4.41	NA	NA				7.44	3.94	3.15	
FALK 06UW	5185	7.09	2.20	4.06	4.72	0.79	1.97				9.55	6.77	3.54	
SEW S62	3140	7.09	2.36	3.58	5.51	NA	NA	5.12	4.80	0.55	9.09	5.12	3.15	1.5000
SEW S67	4032	6.61	2.36	3.78	5.51	NA	NA		5.12	0.53	9.29	5.12	3.15	

07UW-10UW

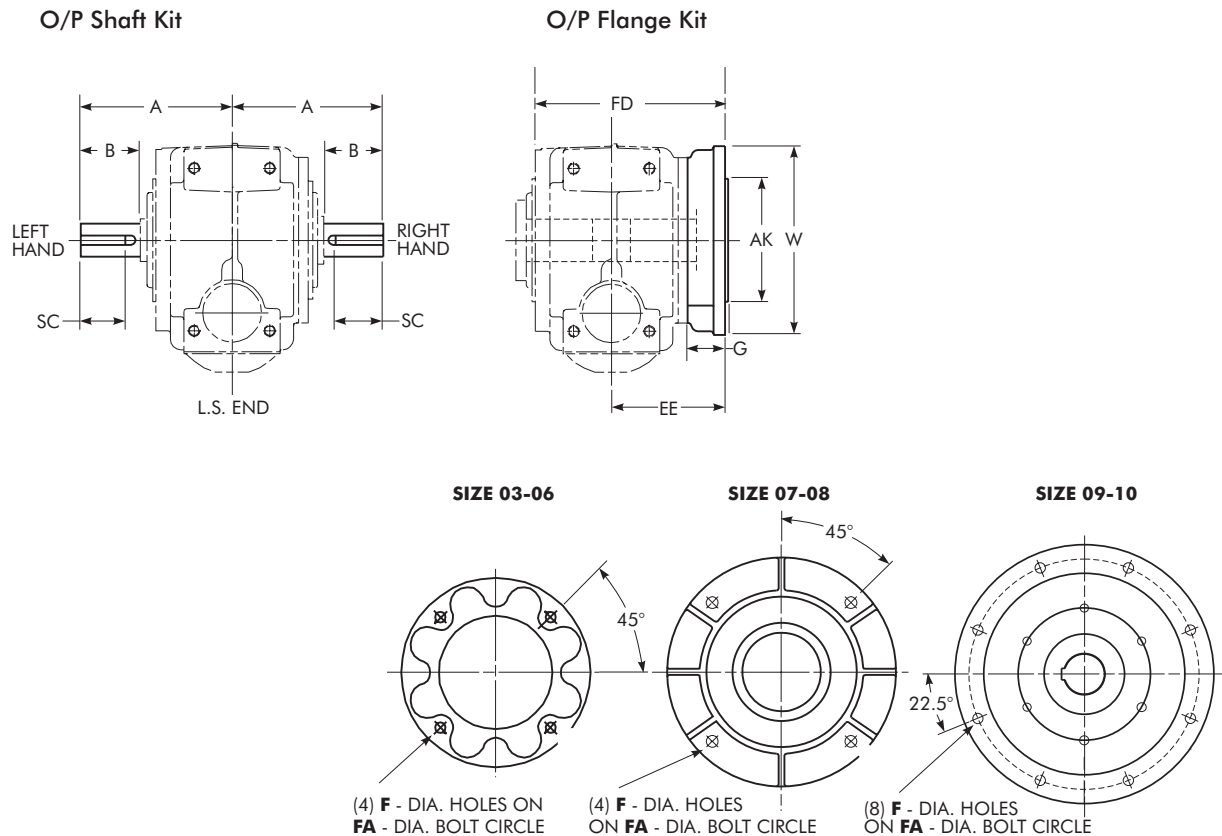


Interchange Data — Inches

SIZE	Torque ★ (lb-in.)	A	B	C	D	DR	E	F	H	O	T	U
FALK 07UW	7049	8.58		4.80							5.63	
SEW S72	6190	8.58	2.95	4.37	7.09	7.28	5.90	5.31	0.71	11.90	4.92	2.000
SEW S77	8450	8.27		4.76					0.69	11.46	4.92	
FALK 08UW	13,712	11.00		5.91						14.81	6.61	
SEW S82	10,200	9.84	3.62	5.79	8.90	9.84	7.88	7.09	0.87	14.65	5.91	2.375
SEW S87	11,167	9.84		5.63						14.49	5.91	
FALK 09UW	25,275	13.26		6.97		12.00				17.97	7.68	
SEW S92	19,200	11.81	4.53	7.01	11.00	11.81	9.84	9.25	1.02	18.03	7.09	2.750
SEW S97	23,900	11.42		6.89		11.81				17.91	7.09	
FALK 10UW	45,920	15.28	6.69	9.06	13.20	14.18	11.82	12.20	1.02	22.26	9.25	3.250

★ Torque is based on closest cataloged 25:1 ratio with 1750 rpm input.

Falk UW Ultramite vs. SEW Series S Accessories



Accessories Interchange Data — Inches

SIZE	A	B	Single Ext O/P Shaft	Double Ext O/P Shaft	SC	FD	EE	G	AK	W	FA	F
FALK 03UW SEW S32 SEW S37	3.94	1.38 1.57 1.57	0.7500	0.7500	1.1875 1.0625 1.0625	5.67 5.57 5.57	3.31	0.39	4.33	7.09 6.30 6.30	5.12	0.35
FALK 04UW SEW S42 SEW S47	4.53	1.81 1.97 1.97	1.0000	1.0000	1.5625 1.9375 1.9375	7.48 6.50 6.77	4.53 3.71 3.94	0.47	5.12	7.87	5.12	0.43
FALK 05UW SEW S52 SEW S57	5.28	2.36	1.2500	1.2500	2.0000 1.6875 1.6875	7.44 7.36 7.36	4.17 4.17 4.21	0.63 0.63 0.59	7.09	9.84	6.50	0.55 0.55 0.53
FALK 06UW SEW S62 SEW S67	6.30 6.34 6.73	2.48 2.76 2.76	1.3750	1.3750	2.1872 1.8125 1.8125	8.66 7.94 7.86	5.12 4.44 4.75	0.63 0.59 0.59	7.09	9.84	6.50	0.55 0.55 0.53
FALK 07UW SEW S72 SEW S77	7.68 7.72 8.11	2.99 3.54 3.54	1.7500	1.7500	2.6875 2.7500 2.7500	9.72 9.68 9.57	5.59	0.71 0.59 0.63	9.06 7.09 9.06	11.81 9.84 11.81	8.46	0.55 0.55 0.53
FALK 08UW SEW S82 SEW S87	10.04	4.72	2.3750	2.3125 2.3750 2.3750	4.1875 3.2500 3.6250	11.22 10.51 11.34	6.50 5.59 5.91	0.71 0.79 0.71	9.84	13.78	11.81	0.71 0.71 0.69
FALK 09UW SEW S92 SEW S97	11.61	5.31 5.51 5.51	2.8750	2.6875 2.8750 2.8750	4.6875 3.5000 4.1250	13.82 13.47 14.29	7.92 7.56 7.56	0.79 0.87 0.87	13.78	17.72	15.75	0.71 0.71 0.69
FALK 10UW	14.41	6.69	3.6250	3.1875	6.3281	16.16	9.27	0.87	13.78	17.72	15.75	0.71